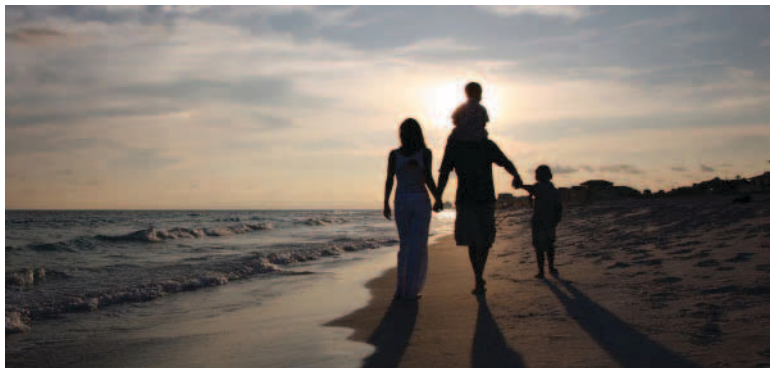


PSYCH COVERAGE



858.531.9528 local

858.273.1659 fax

Info@PsychCoverage.com

www.PsychCoverage.com

800.544.6444

If you are a Psychiatrist wanting free time to truly call your own, PsychCoverage is for you.

PsychCoverage is an affordable after-hours clinical coverage service for private practice Psychiatrists.

We are experienced, specially trained Psychiatric Registered Nurses providing access, support and continuity of care to patients with after-hours clinical issues, urgent refill requests and psychiatric emergencies.

As a client of PsychCoverage, you can enjoy evenings and weekends free from the interruptions of on-call responsibility with peace of mind knowing your patients have immediate access to professional care and support. We also provide extended 24/7 coverage for vacations, conferences and sick leave.

Since 1995, the Psychiatric RN's of PsychCoverage have safely triaged over 20,000 routine and emergency after hours' calls, earning the trust of a growing number of California Psychiatrists. We welcome the chance to earn yours. Call or email today!

Evening Coverage

6pm to 8:00am, Mondays thru Fridays

Weekend Coverage

Fridays at 5:00pm thru Mondays at 8:00am

Vacation Coverage

24/7 for the length of your vacation

Full Coverage

Custom Packages available. Contact for details.

"PsychCoverage is a major asset to our practice by helping to reduce the risk that comes with after hours emergencies. They do a great job."

DR. ROSBEN L. GUTIERREZ, M.D
MEDICAL DIRECTOR, PSYCARE

The PsychCoverage System: As representatives of your practice, we provide the continuity of care and customer service so vitally important in maintaining treatment adherence, safety and patient satisfaction. The RN's of PsychCoverage view every patient interaction as an opportunity to support your treatment goals by providing immediate access, education, support and follow-up to your most at risk patients. An approach we refer to as Brief Care Management. Areas of opportunity provided by after-hours calls from patients and family members include:

Monitoring And Safety

- Mood/Anxiety support
- Critical Interventions
- Referral to medical ER
- Facilitate Emergency Psych Hospitalizations
- PRN activation of community first responders

Patient Care and Support

- Urgent refill requests
- Medication teaching
- Symptoms/Side effects
- Treatment compliance
- PRN medication
- Sleep hygiene
- Stress management

Family Support

- Referrals to NAMI
- Twelve Step
- 5150 Process
- Domestic Violence